

New freedom in the surgery

INTRAORAL CAMERA SYSTEM DÜRR VISTACAM CL.iX



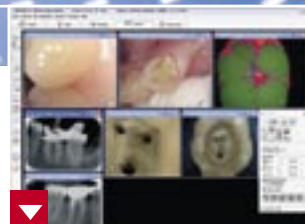
VistaCam CL.iX – the first radio transmission camera with manual



Mobility from patient to patient



Analysis with integrated capture ring



Diagnostics in DBSWIN

VISTACAM



DÜRR
DENTAL

Convincing mobility and efficiency in the surgery

INTRAORAL CAMERA SYSTEM DÜRR VISTACAM CL.iX



VistaCam CL.iX – wireless New freedom in the surgery

The cutting edge in the everyday business of a dental surgery - thanks to mobility and flexibility. Cables, foot pedals and stationary equipment can be an obstacle to progress. The new VistaCam CL.iX however is different. It is the first wireless intraoral camera to offer both manual capture and the transmission of images by radio.

- ▶ Wireless camera system consisting of handpiece and small, smart base station
- ▶ Simple and practical integration into the Hi-Tech surgery via USB 2.0 to PC or laptop monitor
- ▶ Mobile and efficient multi-user solution
- ▶ Dürr IFC optics for recording with an excellent image quality
- ▶ Ergonomic 360° all-around manual capture ring with feedback sensation
- ▶ Convincing diagnostics and patient communication in our DBSWIN software

Fast and flexible from room to room



The 360° capture ring can be actuated ergonomically in any position.



The Dürr IFC optics deliver brilliant colours and the highest of image qualities.

First high-resolution wireless camera with a capture ring

The VistaCam CL.iX combines the image quality of the Dürr IFC Optic with comfort and mobility. The range of uses includes diagnostics at the dentist's chair, patient communication, software-based documentation as well as endodontic and surgical treatment. The 360° control sensor allows the optimum resolution of the Still/Live and Save functions in all positions. The operator can save the recordings quickly, turning the camera, not the hand; slight pressure activates a freeze frame or saves. The sensitive control function confirms the action at the handpiece. Our DBSWIN software saves pin-sharp images patient by patient, making them available centrally in the network.

Flexible and cost-efficient multi-user solution

The VistaCam CL.iX is clearly an asset for the demands of a modern dental practice. The benefits of flexibility and mobility between the treatment rooms is evident, as additional handpieces or foot controls are no longer required. The smart base stations are simply connected to the PC or laptop of the workstation in every room. And the handpiece is "parked" in the central battery charger between the treatment units. All in all, this is convincing proof for the efficiency of the VistaCam CL.iX in a multi-room surgery.

Dürr Iris Focus Control (IFC) – the highly developed optic for extraoral and intraoral recordings as well as macro-recordings

- ▶ With one single turn – changing aperture and focus (saving time, preventing adverse settings)
- ▶ High depth of field, no more zooming when in the mouth – for maximum economies of time
- ▶ Macro-recording with 100-fold magnification enables the detection of D1 lesions, marginal gaps, enamel fractures
- ▶ High resolution with high detail recognition down to a structural size of 12 microns



Perfect ergonomomy at the handpiece: setting of extraoral, intraoral or macro at the adjustable ring of the IFC, operation at the 360° all-around manual capture ring with feedback sensation.

Dürr 360° capture ring with sensitivity control

- ▶ Patented 360° operating sensor for relaxed work in any position
- ▶ Sensitivity of the sensor as required in a surgery for movement free capture and software control with slight pressure
- ▶ Sensitive-Control function for a smooth confirmation of the recording at the handpiece



Maximum depth of field down the root canal through IFC optic.



High-end camera with full mobility - at one glance

INTRAORAL CAMERA SYSTEM DÜRR VISTACAM CL.iX

Model	Dürr VistaCam CL.iX
Weight	approx. 150 g
Handpiece length:	213 mm
Diameter:	max. 27 mm
Voltage supply:	NiMH battery, rechargeable
Radio transmission:	2.4 GHz ISM band (licence-free)
Channels:	5 to choose from
Transmission range:	designed for 1 patient room
Rechargeable battery:	enables an operating time of up to 45 min
Battery charger:	intelligent, with indication of the state of charge
Multi-user operation:	Channel can be selected
Connections:	USB 2.0, Dürr USB foot pedal (optional)
Optical system:	6 LEDs with light collecting lens, Dürr IFC optic with 90° adjustable ring, light-sensitive 1/4" colour CCD sensor, no steaming up, 470,000 pixels
Resolution:	45 LP/mm max., corresponds to 12 µm structural size
Depth of field intraoral:	24 mm for structures down to 60 µm
ON/OFF:	automatic when taken out or put down, or manual
Image representation:	Setting laterally correct or inverted, with a button on the camera
Software:	DBSWIN with 4.5 or higher
System solution:	PC solution



When fully charged, the NiMH battery of the VistaCam CL.iX enables 45 minutes of working time.



Via the smart base station directly to the laptop or the workstation.



VistaCam CL.iX - always ready in the new mobile handpiece holder.

DÜRR DENTAL AG
Höpfigheimer Strasse 17
74321 Bietigheim-Bissingen
Germany

www.duerr.de
export@duerr.de

